

Advance Publication

The Journal of Veterinary Medical Science

Accepted Date: 2 Mar 2018

J-STAGE Advance Published Date: 16 Apr 2018

1 **Note**

2 **Title page**

3 **Black Soldier Fly (*Hermetia illucens*) Larvae Enhances Immune Activities and Increases Survivability of**
4 **Broiler Chicks Against Experimental Infection of *Salmonella Gallinarum***

5

6 Jin-A Lee^{1)†}, Yun-Mi Kim¹⁾, Young-Kyu Park ²⁾, Young-Cheol Yang ²⁾, Bock-Gie Jung ³⁾, Bong-Joo Lee^{1),*}

7

8 ¹⁾ Department of Veterinary Infectious Diseases, College of Veterinary Medicine, Chonnam National University,
9 Gwangju 500-757, Republic of Korea

10 ²⁾ Korea Beneficial Insects Lab. Co., Ltd., Soryong-ri, Okgwa-myeon, Gokseong-gun, Jeollanam-do 57507,
11 Republic of Korea

12 ³⁾ Department of Pulmonary Immunology, Center for Pulmonary and Infectious Diseases Control, University of
13 Texas Health Science Center at Tyler, Tyler, Texas 75708, U.S.A

14 [†]Current address; Center for Virology and Vaccine Research, Harvard Medical School, Beth Israel Deaconess
15 Medical Center, Boston, MA 02115, U.S.A

16

17 ***Corresponding author:** Bong-Joo Lee

18 Address; 300 Yongbong-dong, Buk-gu, College of Veterinary Medicine, Chonnam National University, Gwangju
19 500-757, Republic of Korea

20 Tel; 82-62-530-2850, Fax; 82-62-530-2857, E-mail address: bjlee@chonnam.ac.kr

21

22 **Runnimng head:**

23 **BSFL Enhances Immune Activities**

24 **ABSTRACT**

25 Black soldier fly (*Hermetia illucens*) larvae (BSFL) are rich in protein and have the potential to be used in animal
26 feed. The aim of the present study was to determine the immunoprophylactic effect of BSFL against *Salmonella*
27 *Gallinarum* in broiler chicks as an alternative feed additive. Results showed that BSFL improved body weight gain
28 and increased frequency of CD4⁺ T lymphocyte, serum lysozyme activity, and spleen lymphocyte proliferation.
29 Moreover, BSFL reinforced bacterial clearance and increased survivability of broiler chicks against *S. Gallinarum*.
30 These data suggested that BSFL has prophylactic properties with stimulating non-specific immune responses, as
31 well as reduced bacterial burden against *S. Gallinarum*.

32

33 **Keywords:** black soldier fly, broiler chicks, immune response, *Salmonella* Gallinarum.

34

35 Black Soldier fly (BSF; *Hermetia illucens* (L.) (Diptera, Stratiomyidae) is a large wasp-like fly distributed
36 throughout the world. BSF is useful for managing large amounts of animal manure and other organic waste. It is a
37 representative environmental purification insect [4]. BSF lives in places where there are organic wastes such as
38 livestock products and garbages [17, 19]. Various studies have used BSF for food waste disposal and green waste
39 treatment of livestock products [6, 18]. Larvae of BSF have also been used as feed [2, 7, 23].

40 BSF larvae (BSFL) can provide high-value feedstuff because they are rich in protein (40% to 44%) with better
41 amino acid profile compared to soybean meal [21]. BSFL has high dry matter (DM) content (35% to 45%). They
42 are rich in lysine (6% to 8% of crude protein (CP)), Ca (5% to 8% DM), and P (0.6% to 1.5% DM) [20]. BSFL are
43 also rich in fat which has extreme quantitative (15% to 49%) and qualitative variability depending on the chemical
44 compositions of their rearing substrates [22]. Recently, interesting results have been published about the suitability
45 of different types of insect meal as diet ingredients for pigs and poultry [16, 24]. Moreover, when BSFL meal is
46 used as feed ingredient for poultry diets, BSFL has been found to be excellent source of energy and digestible
47 amino acids for broilers [4]. Another report has found that black soldier fly meal can improve the growth rate of
48 broiler quails as a component of a complete diet [3]

49 *Salmonella enterica* serovar Gallinarum (*S. Gallinarum*) causes fowl typhoid, a severe systemic infection that can
50 lead to anemia, leukocytosis, hepatosplenomegaly, and intestinal tract hemorrhage [21]. Although fowl typhoid
51 has been eradicated from some countries such as Australia, North America, and most European countries, it is still
52 a serious problem in Korean poultry industry [12]. On the basis of the above-mentioned facts, the objective of this
53 study was to evaluate productivity, immunity, and experimental *Salmonella* infection of broiler chicken fed with
54 BSLF.

55 Three independent studies, including growth performance, immunological assays, and monitoring of survivability
56 against experimental *Salmonella* infection described below were conducted with broiler chicks from a single
57 healthy stock. All chicks were housed in separate air-controlled rooms. They were provided free access to tap water
58 and particular diet. All animal procedures were approved by the Institutional Animal Care and Use Committee of
59 Chonnam National University. In each independent study, chicks were randomized into four feeding groups. The
60 control group received a commercial and nutritionally complete antibiotic-free chicken feed (Hanvit Bio., Korea).
61 Experiment groups received the same chicken feed supplemented with 1% (w/w) BSFL (1% BSFL-fed group), 2%
62 (w/w) BSFL (2% BSFL-fed group), or 3% (w/w) BSFL (3% BSFL-fed group).

63 For growth performance assay, a total of 80 one-day-old unsexed Ross broiler chicks were randomly distributed
64 to the four dietary treatment groups (20 chicks per group). Performance traits including average daily weight gain
65 (ADWG), feed intake (ADFI), and feed conversion ratio (FCR) were recorded. Dietary replacement of BSFL

66 resulted in increased ADWG throughout the experimental period (data not shown). After examining the length of
67 time to reach the final target weight of 1.3 kg, the control group needed 32 days. However, the 1%, 2%, and 3%
68 BSFL-fed groups only needed 30 days. This indicates that growth performance of broiler chicks can be enhanced
69 by ingestion of BSFL.

70 For immunological assay, chicks (n = 10 in each group) were fed particular diet for 20 days. Animal experiment
71 procedure was the same as described above. Chicks were subjected to immunological assays including the assay
72 for determining spleen T lymphocyte subpopulations, lysozyme activity, and spleen cell proliferation assay. The
73 spleen was obtained from each chick and single-cell suspension was prepared by pushing the tissue through a 40-
74 μm nylon mesh (BD Biosciences, Franklin Lakes, NJ, U.S.A.). Isolated cells were stained with both fluorescein
75 isothiocyanate (FITC)-conjugated mouse anti-chicken CD3 (BD Biosciences.) and phycoerythrin (PE)-conjugated
76 mouse anti-chicken CD4 (Southern Biotech) to determine the component ratio of T helper cells (CD3⁺CD4⁺) as
77 described previously [1, 9]. To determine T cytotoxic cells, cells were stained with both FITC-conjugated mouse
78 anti-chicken CD3 (Southern Biotech) and PE-conjugated mouse anti-chicken CD8 (BD Biosciences). Lymphocyte
79 subpopulations were analyzed using a FAC Sort flow cytometer (BD Biosciences). Percentages of CD3⁺CD4⁺ T
80 lymphocytes in spleens of BSFL-fed groups (1%, 2%, and 3% BSFL: 33.13%, 38.55% and 40.42%, respectively)
81 were significantly higher compared to those of the control group (31.90 %) in a dose dependent manner (control
82 vs. 2% BSFL-fed group, $P < 0.05$; control vs. 3% BSFL-fed group, $P < 0.01$) (Fig. 1). In the present study,
83 percentages of spleen CD3⁺CD4⁺ T lymphocytes in BSFL-fed groups were significantly increased in a dose-
84 dependent manner compared to that of the control group. These results imply that BSFL can confer benefit to
85 immune function in broiler chicks.

86 To perform spleen lymphocyte proliferation assay, spleen cells were washed with PBS three times prior to
87 resuspension in 2 ml RPMI-1640 medium (Lonza, Basel, Switzerland) supplemented with 2% (v/v) antibiotic-
88 antimycotics (Invitrogen, Valencia, CA, U.S.A.). Cell suspensions were diluted to a final density of 1×10^7 cells/ml
89 in RPMI-1640 medium. One milliliter of cell suspension and 100 $\mu\text{g}/\text{ml}$ concanavalin a (ConA) (Sigma-Aldrich,
90 St. Louis, MO, U.S.A.) were added to wells in 24-well cell culture plate (Iwaki, Tokyo, Japan). After 24 h of
91 incubation in 5% CO₂ incubator at 41°C, 3-(4,5-dimethylthiazol-2-yl)-2,5 diphenyl tetrazolium salt (MTT) (Sigma-
92 Aldrich) was added to cell culture to a final concentration of 500 $\mu\text{g}/\text{ml}$. Cells were incubated for a further of 4 h.
93 Then 300 μl of dimethyl sulfoxide (DMSO)(Sigma-Aldrich) was added to cell culture. The absorbance of each
94 sample was read using an enzyme-linked immunosorbent assay (ELISA) plate reader (Thermo Labsystems,
95 Helsinki, Finland) at wavelength of 540 nm to obtain the optical density (OD_{540nm}) as described previously [14].
96 Spleen lymphocyte proliferation of BSFL-fed groups (OD_{540nm} values for 1%, 2%, and 3% BSFL: 0.15, 0.18, and

0.20, respectively) was significantly enhanced compared to that of the control group (OD_{540nm} value: 0.14) in a dose-dependent manner group (control vs. 2% BSFL-fed group, $P < 0.05$; control vs. 3% BSFL-fed group, $P < 0.01$) (Fig. 2). These results indicate that mitogenicity of lymphocytes in broiler chicks is enhanced by ingestion of BSFL.

To determine lysozyme activity in serum, blood was collected from the wing vein of each chick on day 20. Serum was obtained by centrifugation at $2,000 \times g$ for 10 min at 4°C. Lysozyme activity was determined using a previously described method [11]. Serum lysozyme concentration in BSFL-fed groups (1%, 2% and 3% BSFL: 4.07, 4.46 and 4.70, respectively) was significantly higher than that in the control group (3.76) in a dose-dependent manner (control vs. 2% BSFL-fed group, $P < 0.05$; control vs. 3% BSFL-fed group, $P < 0.01$) (Fig. 3). Lysozyme is secreted by some phagocytes such as macrophages and polymorphonuclear leukocytes. After internalization of antigens, lysozyme can destroy glucosidic bonds in cell walls of bacteria as a result of their phagocytic activity [18]. In this study, serum lysozyme activities of 2% and 3% BSFL-fed groups were significantly higher than those of the control group. Increased lysozyme activity in the serum is associated with increased destructive activity of phagocytes [11]. These results indicate that continuous ingestion of BSFL is able to stimulate the activation of phagocytes.

To determine the immunomodulation effect of BSFL on broiler chicks, prophylactic effect of BSFL against *Salmonella Gallinarum*, the most serious problem in Korean poultry industry [15], was determined in this study. *Salmonella Gallinarum* (SG3001) used in the present study was originally isolated from a chick with naturally occurring fowl typhoid (National Veterinary Research & Quarantine Service). All chicks ($n = 20$ in each group) were acclimatized to their particular diets for 3 weeks before experimental bacterial infection. Prior to the experiment, chicks were confirmed to be *Salmonella*-free by bacteriological culture of fecal samples obtained by cloacal swabs [10]. *S. Gallinarum* (SG3001) was prepared as described previously [25]. Each chick was orally challenged with 5×10^{10} cfu, the optimal dose determined in our previous study [8, 10]. Chicks were then observed for 15 days after bacterial challenge. Their survivability was recorded. Fecal samples from cloacal swabs were collected at 1, 5, 10, and 15 days post-infection (DPI). Liver, spleen, cecum, and bursa of Fabricius samples were also collected from all remaining chicks at the end of the experiment. Viable bacteria counts in fecal samples and each tissue were determined as described previously [2]. Mortality was first observed at 3 DPI in the control group. In BSFL-fed groups, mortality was delayed for 2-3 days compared to that in the control group. Final survival rates in 1%, 2%, and 3% BSFL-fed groups were 67%, 75%, and 85%, respectively. However, the survival rate of the control group was only 50% (Fig. 4). Strikingly, 3% BSFL-fed group showed significant increase of survival rate compared to that of control group. These results indicate that ingestion of BSFL can increase survival rates of

128 broiler chicks experimentally infected by *Salmonella* Gallinarum. This might be due to the general immune
129 enhancing effect of BSFL.

130 Viable bacteria cell counts in liver, spleen, bursa of Fabricius, and cecum samples collected from each sacrificed
131 chick at 16 DPI were determined. Each tissue sample was homogenized using a Precellys®24 (Bertin Technologies,
132 Montigny-le-Bretonneux, France). Homogenate was then serially diluted 10-fold in PBS and 100 μ l of each
133 dilution was spread onto xylose lysine deoxycholate agar plate followed by incubation at 37°C for 24 h.
134 Characteristic black-colored colonies were counted and expressed as log cfu/g tissue as described previously [14].
135 In addition, representative colonies were subjected to Gram-staining and biochemical tests for identification [10].
136 Each sample was tested in duplicates. The number of viable bacterial cells in tissues of BSFL-fed groups tended
137 to decrease during the entire experimental infection period compared to that of the control group. Differences
138 between viable bacterial cell counts in tissues of 2% and 3% BSFL-fed groups and those of the control group were
139 significant ($P < 0.05$) (Fig. 5).

140 Taken together, these findings suggest that BSFL feeding can stimulate nonspecific immune responses in broiler
141 chicks and increase their survivability against *S. Gallinarum* experimental infection. Previous studies suggested
142 that application of immune stimulating agent might result in maximum growth performance since animals is more
143 prone to be influenced by the health and immune status so that a stressed or weak immune system with a load of
144 infectious diseases causes decreased growth performance [5, 13]. Therefore, increasing growth performance
145 induced by ingestion of BSFL in this present study might related in stimulated non-specific immune status.
146 However, the present study did not investigate the exact mechanism involved in the protection of BSFL against *S.*
147 *Gallinarum* in broiler chicks. In addition, precise knowledge about the major component(s) of BSFL responsible
148 for its immune enhancing effect is needed since BSFL contains a complex array of compounds. Such studies are
149 currently in progress.

150 All data are expressed as means \pm standard deviation (SD) of means. Student's *t*-test was used for statistical
151 analysis of data. All statistical analyses were performed using SigmaPlot® version 10.0 software (Systat Software,
152 San Jose, CA, U.S.A.). Statistical significance was considered when *P* value was less than 0.05 (*, $P < 0.05$, **, P
153 < 0.01)

154 ACKNOWLEDGMENTS.

155 This research was financially supported by Technology Development Program for Agriculture and Forestry,
156 Ministry for Food, Agriculture, Forestry and Fisheries, Republic of Korea and Chonnam National University, 2016.
157 The authors have no conflicts of interests to declare.

158 **REFERENCES**

- 159 1. Abdukalykova, S. T., Zhao, X. and Ruiz-Feria, C. A. 2008. Arginine and vitamin E modulate the
160 subpopulations of T lymphocytes in broiler chickens. *Poult. Sci.* **87**: 50-55.
- 161 2. Bondari, K. and Sheppard, D.C. 1987. Soldier fly, *Hermetia illucens* L., larvae as feed for channel catfish,
162 *Ictalurus punctatus* Rafinesque, and blue tilapia, *Oreochromis aureus* (Steindachner). *Aquaculture and*
163 *Fisheries Mgt.* **18**: 209-220.
- 164 3. Cullere, M., Tasoniero, G., Giaccone, V., Miotti-Scapin, R., Claeys, E., De Smet, S. and Dalle Zotte, A. 2016.
165 Black soldier fly as dietary protein source for broiler quails: apparent digestibility, excreta microbial load, feed
166 choice, performance, carcass and meat traits. *Animal.* **10**: 1923-1930.
- 167 4. De Marco, M., Martínez, S., Hernandez, F., Madrid, J., Gai, F., Rotolo, R., Belforti, M., Bergero D., Katz H.,
168 Dabbou, S., Kovitvadhi, A., Zoccarato, I., Gasco, L, and Schiavone, A. 2015. Nutritional value of two insect
169 larval meals (*Tenebrio molitor* and *Hermetia illucens*) for broiler chickens: apparent nutrient digestibility,
170 apparent ileal amino acid digestibility and apparent metabolizable energy. *Animal Feed Science and*
171 *Technology.* **209**: 211-218.
- 172 5. Faluyi, O. B., Agbede, J. O. and Adebayo I. A. 2015. Growth performance and immunological response to
173 Newcastle disease vaccinations of broiler chickens fed lysine supplemented diets. *J. Vet. Med. Anim. Health.*
174 **7**: 77-84.
- 175 6. Furman, D. P., Young, R. D. and Catts E. P. 1959. *Hermetia illucens* Latr. *Rev. Soc. Ent. Argentina.* **1**: 23-27.
- 176 7. Hale, O.M. 1973. Dried *Hermetia illucens* larvae (Diptera: Stratiomyidae) as feed additive for poultry. *J. Ga.*
177 *Entomol.* **8**: 16-20.
- 178 8. Huberman, Y. D. and Terzolo, H. R. 2008. Fowl typhoid: assessment of a disinfectant oral dose to reduce
179 horizontal spread and mortality. *Avian Dis.* **52**: 320-323.
- 180 9. Jung, B. G., Ko, J. H. and Lee, B. J. 2010. Dietary supplementation with a probiotic fermented four-herb
181 combination enhances immune activity in broiler chicks and increases survivability against *Salmonella*
182 *Gallinarum* in experimentally infected broiler chicks. *J. Vet. Med. Sci.* **72**: 1565-1573.
- 183 10. Jung, B. G., Lee, J. A., Park, S. B., Hyun, P. M., Park, J. K., Suh, G. H. and Lee, B. J. 2013.
184 Immunoprophylactic effects of administering honeybee (*Apis mellifera*) venom spray against *Salmonella*
185 *gallinarum* in broiler chicks. *J. Vet. Med. Sci.* **75**: 1287-1295.
- 186 11. Kreukniet, M. B., Nieuwland, M. G. and van der Zijpp, A. J. 1995. Phagocytic activity of two lines of chickens
187 divergently selected for antibody production. *Vet. Immunol. Immunopathol.* **44**: 377-387.

- 188 12. Kwon, Y. K., Kim, A., Kang, M. S., Her, M., Jung, B. Y., Lee, K. M., Jeong, W., An, B. K. and Kwon, J. H.
189 2010. Prevalence and characterization of *Salmonella* Gallinarum in the chicken in Korea during 2000 to 2008.
190 *Poult. Sci.* **89**: 236-242.
- 191 13. Landy, N., Ghulamkari, G.h., Toghyani, M. and Moattar, F. 2011. The effects of *Echinacea purpurea* L. (purple
192 coneflower) as an antibiotic growth promoter substitution on performance, carcass characteristics and humoral
193 immune response in broiler chickens. *J. Med. Plants Res.* 5(11): 2332-2338.
- 194 14. Lee, J.A., Jung, B.G., Kim, T.H., Kim, Y.M., Park, M.H., Hyun, P.M., Jeon, J.W., Park, J.K., Cho, C.W., Suh,
195 G.H. and Lee, B.J. 2014. Poly d,l-lactide-co-glycolide (PLGA) nanoparticle-encapsulated honeybee (*Apis*
196 *melifera*) venom promotes clearance of *Salmonella enterica* serovar Typhimurium infection in experimentally
197 challenged pigs through the up-regulation of T helper type 1 specific immune responses. *Vet. Immunol.*
198 *Immunopathol.* **161**: 193-204.
- 199 15. Lee, Y. J., Mo, I. P. and Kang, M. S. 2007. Protective efficacy of live *Salmonella gallinarum* 9R vaccine in
200 commercial layer flocks. *Avian Pathol.* **36**: 495-498.
- 201 16. Makkar, HPS., Tran, G., Heuze, V. and Ankers, P. 2014. State-of-the-art on use of insects as animal feed.
202 *Animal Feed Science and Technology.* **197**: 1-33.
- 203 17. McCallan, E. 1974. *Hermetia illucens* (L.) (Diptera: Stratiomyidae), a cosmopolitan American species long
204 established in Australia and New Zealand. *Entomol. Mo. Mag.* **109**: 232-234.
- 205 18. Melnick, D. A., Nauseef, W. M., Markowitz, S. D., Gardner, J. P. and Malech, H. L. 1985 Biochemical analysis
206 and subcellular localization of a neutrophil-specific antigen, PMN-7, involved in the respiratory burst. *J.*
207 *Immunol.* **134**: 3346-3355.
- 208 19. Sheppard, D. C., Tomberlin, J. K., Joyce, J. A., Kiser, B. C. and Sumner, S. M. 2002. Rearing methods for the
209 black soldier fly (Diptera: Stratiomyidae). *J. Med. Entomol.* **39**: 695-698.
- 210 20. Sheppard, D.C., Newton, G.L., Thompson, S., Davis, J., Gascho, G. and Bramwell, K. 1998. Using soldier
211 flies as a manur management tool for volume reduction, house fly control and reduction, house fly control and
212 feed stuff production, pp. 51-52. InGwen Roland (ed.), *Sustainable Agriculture Research and Education,*
213 *Southern Region*, Annual Report. Sustainable Agriculture Research and Education, Southern Region, Georgia
214 Station, Griffin, GA, U.S.A
- 215 21. Shivaprasad, H. L. 2000. Fowl typhoid and pullorum disease. *Rev. Sci. Tech.* **19**: 405-24.
- 216 22. St-Hilaire, S., Sheppard, C., Tomberlin, J. K., Irving, S., Newton, L., McGuire, M. A., Mosely, E. E., Hardy,
217 R. and Sealey, W. 2007. Fly prepupae as a feedstuff for rainbow trout, *Onchorynchus mykiss*. *J. World. Aquac.*
218 *Soc.* **38**: 59-67.

- 219 23. Tran, G., Heuzé, V. and Makkar, H. P. S. 2015. Insects in fish diets. *Animal Frontiers*. **5**: 37-44.
- 220 24. Veldkamp, T., van Duinkerken, G., van Huis, A., Lakemond, C. M. M., Ottevanger, E., Bosch, G. and van
221 Boekel, M. A. J. S. 2012. Insects as a sustainable feed ingredient in pig and poultry diets –a feasibility study.
222 *Wageningen UR Livestock Production, Wageningen, the Netherlands*, report no. **638**: 1-48.
- 223 25. Waihenya, R. K., Mtambo, M. M., Nkwengulila, G. and Minga, U. M. 2002. Efficacy of crude extract of Aloe
224 secundiflora against *Salmonella gallinarum* in experimentally infected free-range chickens in Tanzania. *J.*
225 *Ethnopharmacol.* **79**: 317-323
- 226

227 **Figure legends**

228 Fig.1. Effect of BSFL feeding on spleen T lymphocyte subpopulations in broiler chicks. Percentages of CD3⁺CD4⁺
229 T lymphocyte in spleens of BSF-fed groups were significantly higher compared to those of the control group (*,
230 $P < 0.05$; **, $P < 0.01$). For each group, data are presented as mean \pm SD (n = 10).

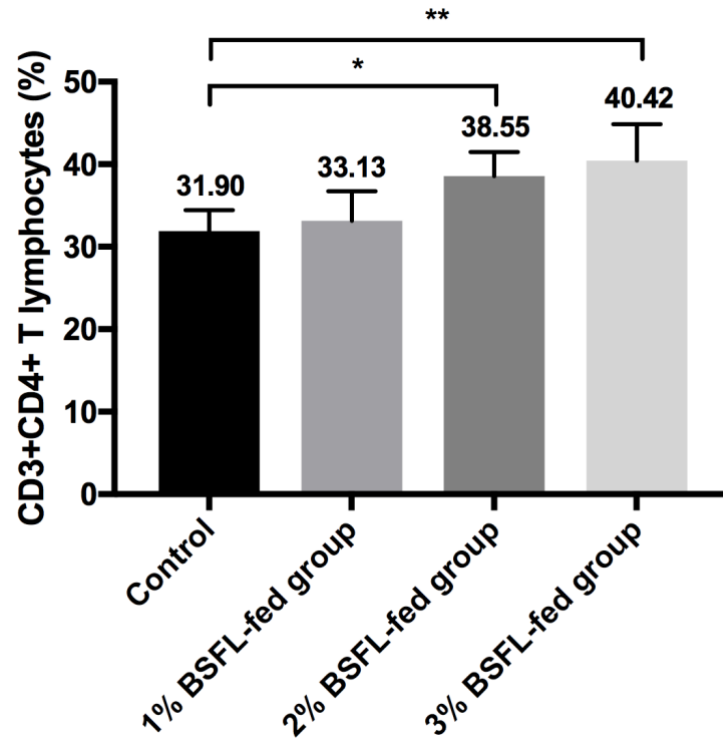
231 Fig.2. Effect of BSFL feeding on spleen cell proliferation in broiler chicks. Spleen cells were co-incubated with or
232 without mitogen (ConA). Spleen cell proliferation was then determined as OD_{540nm} value of colored material after
233 incubation with MTT. Spleen cell proliferation in BSFL-fed group was significantly enhanced compared to that of
234 the control group (*, $P < 0.05$; **, $P < 0.01$). Proliferation of unstimulated cells did not show difference between
235 groups. For each group, data are presented as mean OD_{540nm} \pm SD (n = 10).

236 Fig.3. Effect of BSFL feeding on serum lysozyme activity in broiler chicks. Serum lysozyme concentration in
237 BSFL-fed group was significantly higher than that of the control group (*, $P < 0.05$; **, $P < 0.01$). For each group,
238 data are presented as mean \pm SD (n = 10).

239 Fig.4. Trend of survival rate of broiler chicks experimentally infected by *Salmonella* Gallinarum. (A) 20 chicks
240 were experimentally challenged with *Salmonella* Gallinarum and monitored up to 15 days after the infection.
241 Survival rate of BSFL-fed group, especially in 3% BSFL-fed group, was significantly higher compared to that of
242 the control group (*, $P < 0.05$). (B) Final survival rate of each group at the end of the experiment. For each group,
243 data are presented as mean \pm SD.

244 Fig.5. Viable bacteria cell was counted in the liver, spleen, bursa, and cecum. Viable bacteria cells count in tissues
245 of the BSFL-fed group were significantly lower compared to those of the control group at the end of the experiment
246 (*, $P < 0.05$). For each group, data are presented as mean \pm SD.

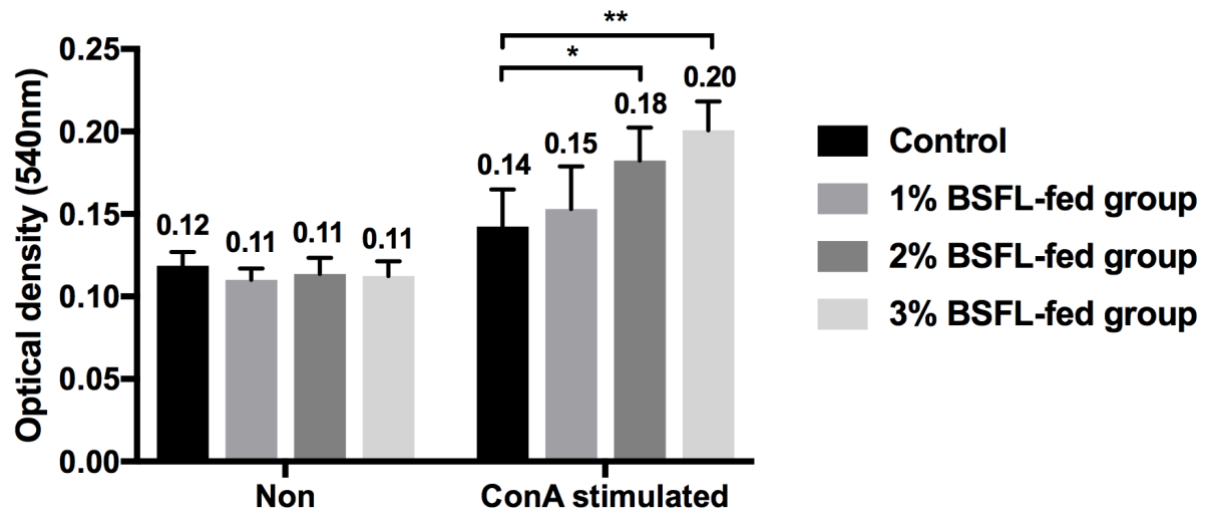
247



248

249 Fig.1. Effect of BSFL feeding on spleen T lymphocyte subpopulations in broiler chicks. Percentages of CD3⁺CD4⁺
250 T lymphocyte in spleens of BSF-fed groups were significantly higher compared to those of the control group (*,
251 $P < 0.05$; **, $P < 0.01$). For each group, data are presented as mean \pm SD (n = 10).

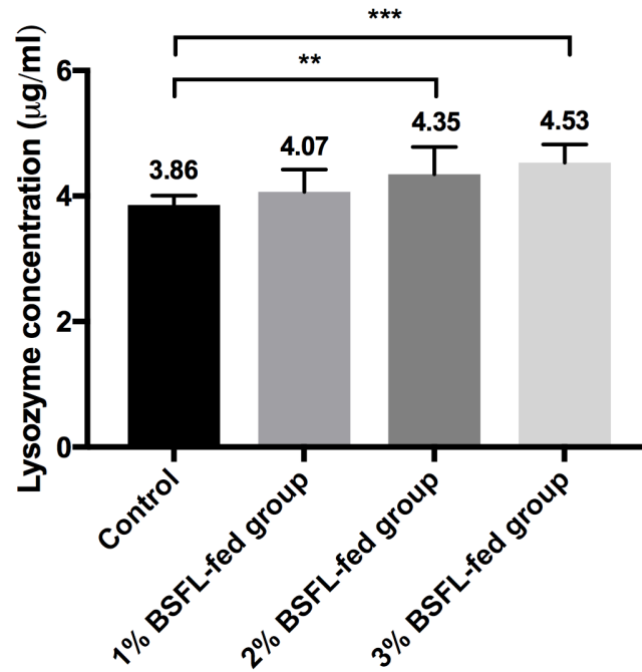
252



253

254 Fig.2. Effect of BSFL feeding on spleen cell proliferation in broiler chicks. Spleen cells were co-incubated with or
 255 without mitogen (ConA). Spleen cell proliferation was then determined as OD_{540nm} value of colored material after
 256 incubation with MTT. Spleen cell proliferation in BSFL-fed group was significantly enhanced compared to that of
 257 the control group (*, $P < 0.05$; **, $P < 0.01$). Proliferation of unstimulated cells did not show difference between
 258 groups. For each group, data are presented as mean OD_{540nm} \pm SD (n = 10).

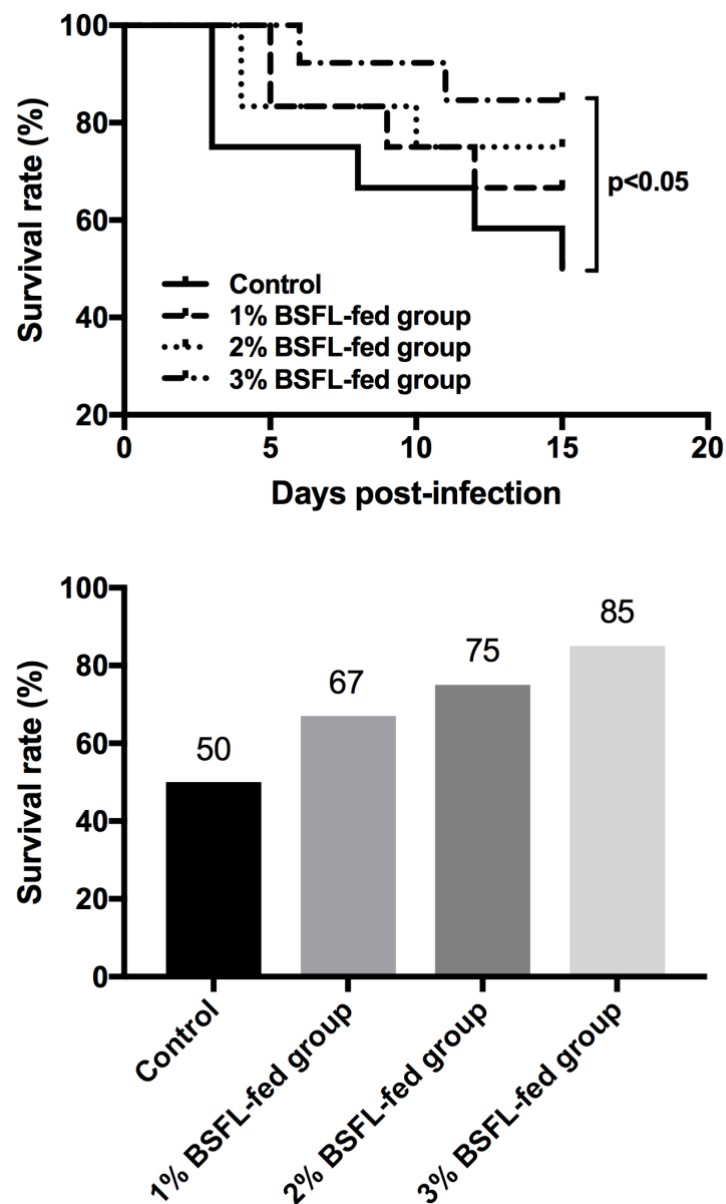
259



260

261 Fig.3. Effect of BSFL feeding on serum lysozyme activity in broiler chicks. Serum lysozyme concentration in
262 BSFL-fed group was significantly higher than that of the control group (*, $P < 0.05$; **, $P < 0.01$). For each group,
263 data are presented as mean \pm SD (n = 10).

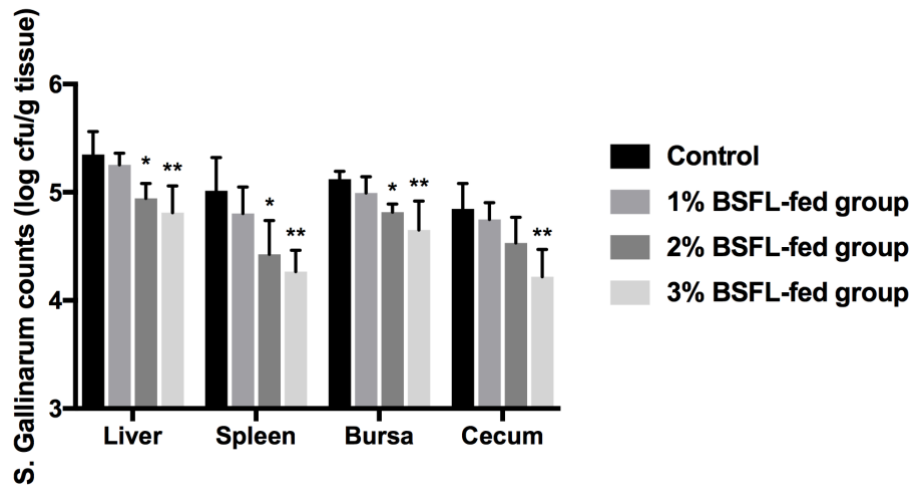
264



265

266 Fig.4. Trend of survival rate of broiler chicks experimentally infected by *Salmonella* Gallinarum. (A) 20 chicks
 267 were experimentally challenged with *Salmonella* Gallinarum and monitored up to 15 days after the infection.
 268 Survival rate of BSFL-fed group, especially in 3% BSFL-fed group, was significantly higher compared to that of
 269 the control group (*, $P < 0.05$). (B) Final survival rate of each group at the end of the experiment. For each group,
 270 data are presented as mean \pm SD.

271



272

273 Fig.5. Viable bacteria cell was counted in the liver, spleen, bursa, and cecum. Viable bacteria cells count in tissues

274 of the BSFL-fed group were significantly lower compared to those of the control group at the end of the experiment

275 (*, $P < 0.05$). For each group, data are presented as mean \pm SD.

276